



LPT- Techserve

(Lakshmi Precision Technologies Limited)

A Commitment to Excellence





Lakshmi Precision Technologies Limited – Location



Corporate Office

504, Avinashi Road, Peelamedu Post,
Coimbatore -641004.

Offshore Development Center (ODC)

Block – A1, First Floor,

Rathinam Techno Park Campus – SEZ
Campus

Pollachi Main Road, Eachanari, Coimbatore
– 641021, Tamilnadu, India

Rathinam Technopark – SEZ Unit





Company Profile

Lakshmi Precision Technologies Limited (LPT), is an US\$ 16 Million / INR 132 Crore public limited company, established in 1983 where it is chosen to focus on engineering solutions for Industrial products, Automotive & Off Highway, Textile applications, Agriculture equipment's, Food process machines, Medical & Biotech and Dairy machines etc.



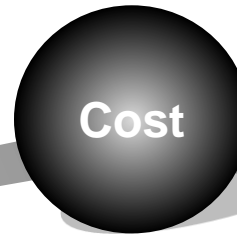


LPT Philosophy

- ✓ Continuous Improvement
- ✓ Multi skilling



Quality



Cost

- ✓ Productivity
- ✓ Value Engineering



Delivery

- ✓ On-time Delivery
Every-time & All Time



Health
&
Safety

- ✓ Ensure Safe Work Environment
- ✓ Zero Non-Compliance



Development

- ✓ Technology Advancement
- ✓ First Time Right





Lakshmi Precision Technologies Limited (LPT – Techserve Division)



Product Verticals & Solutions

Industrial products

Medical products /
Biotech Products

Textile Applications

Agriculture / Mining
products

Trucks &
Off -Highway

Food process
machines

Mechanical & Electrical Engineering

CAE / CFD/ Mold flow

Plastics Engineering

Integrated Manufacturing solutions & Supply chain

Bench marking, Tear down, VAVE, Testing & Prototyping



Mechanical, Electrical CAD and Production Engineering (Product optimization supports)

Proto development & Reliability testing

Finite Element Analysis
(Ansys Software)

Design Change Management

3d Cad Cleanup &
Cad Drawings

Mold Flow
Analysis

Should Costing
(aPriori software)

Technical Manpower
Deputation (Overseas)

Global Product
Standardization

DFMEA &
PFMEA

Value Analysis &
Value Engineering

Supply Chain
Solutions

Parametric Part Library &
Catalogues

NPI Technical work Instructions
(Catia Composer Software)

Wire Harness Design &
Development

Knowledge Based Engineering
& PLM Support

Material Handling
Equipment (MHE)

Medical Product
Regulatory Documentation



Wiring harness Design & Development integrated support

THE CHALLENGE

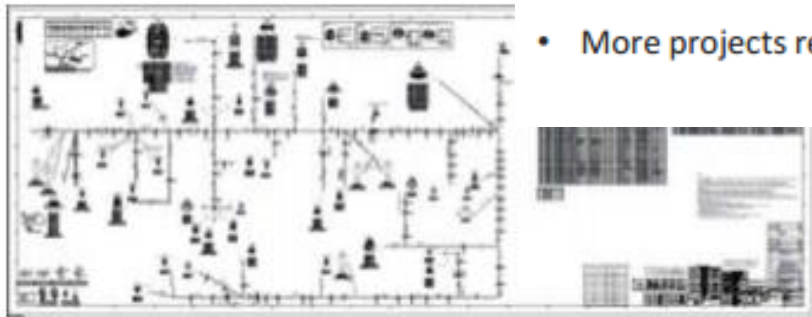
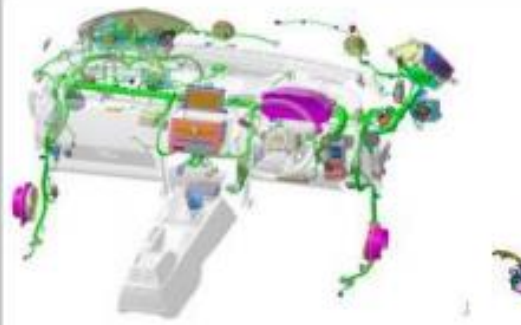
- Creation of component database, schematic creation, 3D routing of wire harness, generation of manufacturing drawings, BOM list
- Basic drawing of harness, schematics, CAD files was available as input.

SOLUTION HIGHLIGHTS

- Schematic drawings with simulation report
- 3D layout of wiring harness
- Manufacturing drawings
- Bill of Materials

BUSINESS VALUE DELIVERED

- Each program has got limited timeline and the complexity of wiring harness achieved with zero errors and on time delivery
- More projects rewarded due to quality of work done for long term





We Provide Total Solutions
in Wire Harnessing for,

- Industrial Products
- Automotives



Fully Automatic Cutting & Stripping Machine



Stripping & Crimping Machine



Lug Crimping machine



Cable Pullout Testing Machine



Computerised Marking facilities

Sustenance and Support Activities

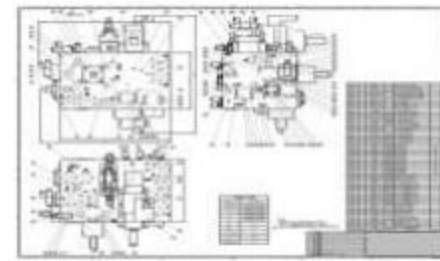
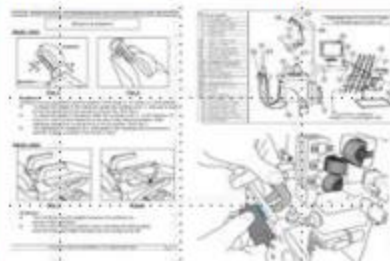
CAD & Engineering Documentation Support

Parametric part libraries and catalogues

Technical Publication (sales, service and

Technical Documentation (Release mar

Knowledge Based Engineering & PLM Support



FMEA Approach



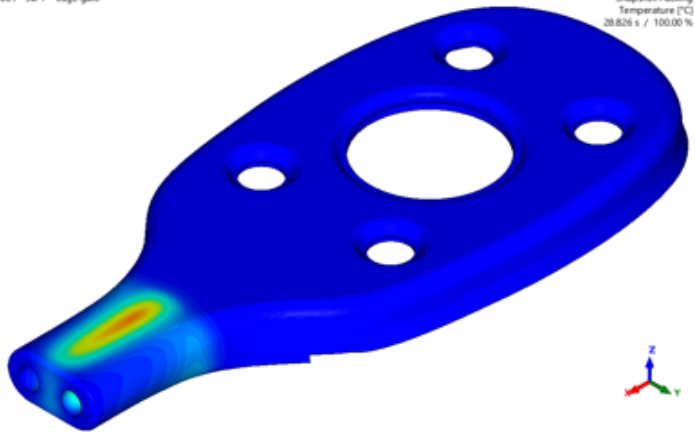


Plastics/Injection Molding – Mold Flow Analysis

PACKING PHASE AVERAGE TEMPERATURES DURING EJECTION



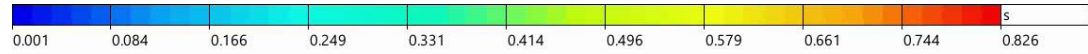
001 - 3D-F - edge gate



edge gate

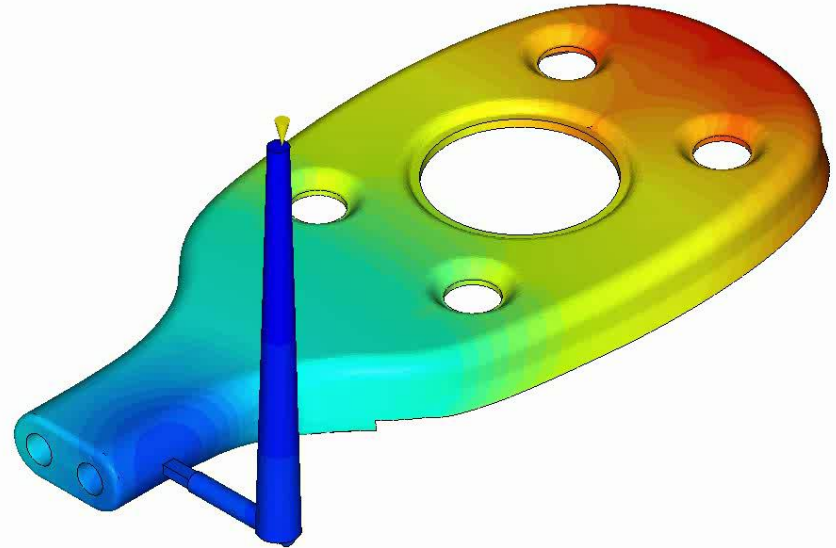
CADMOULD

➤ Part temperature during ejection is within the limit



001 - 3D-F - edge gate

Flow Front
Time when filled [s]
0.826 s / 100.00 %



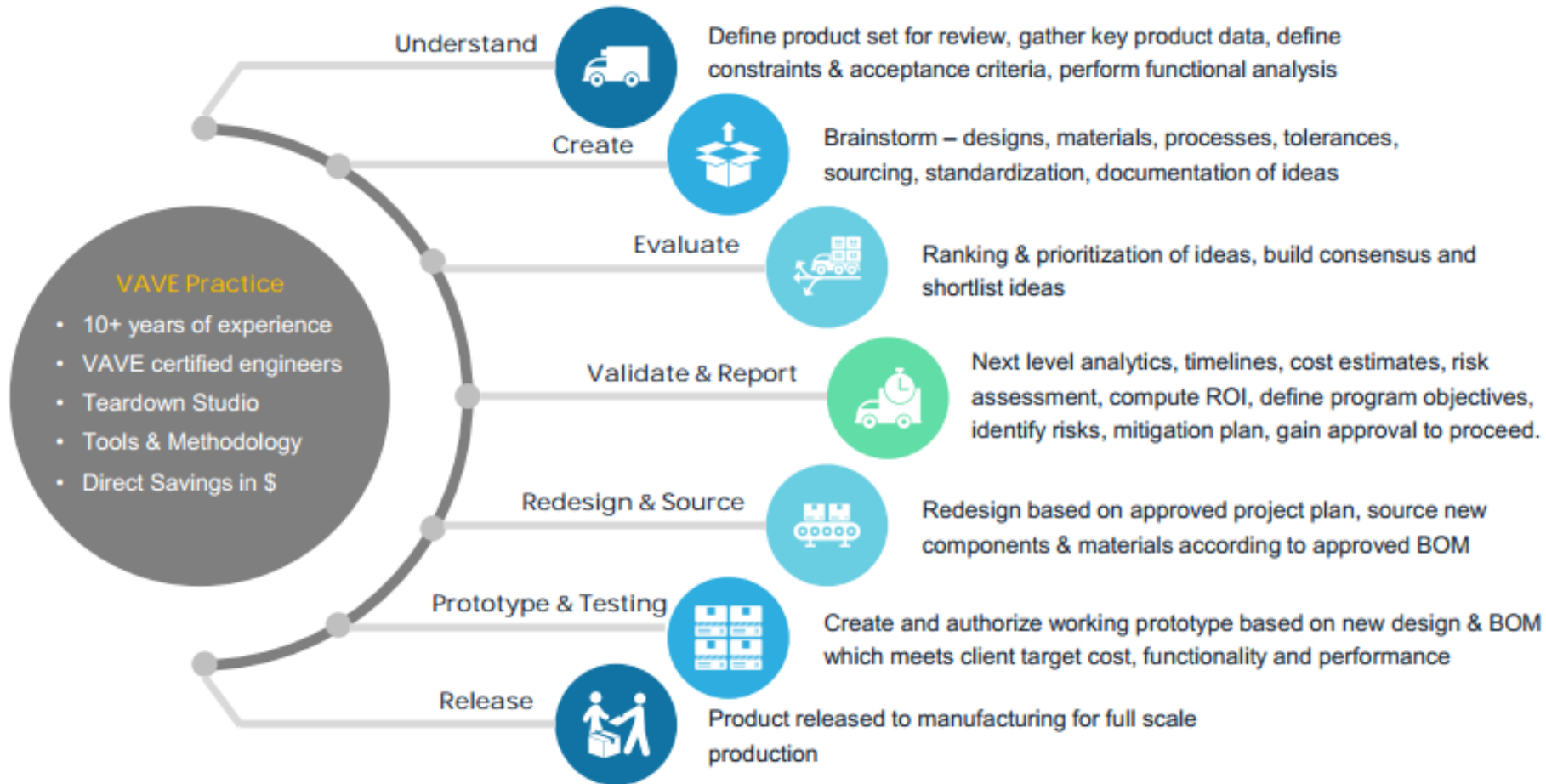
edge gate

CADMOULD



Value Engineering Overview & Services

Support on Full life cycle of Value Engineering Projects



Production/NPI Technical work instructions

BOM ID	Description	Qty
B1	Screw_top_M5_5x13 A4.70 ISO14585-C	11
B2	Frame_495x2287x1195mm control panel	1
B3	Frame_2202x42_6x1.5mm vertical middle leg	2
B4	Bolt M8x20 8.8 ISO4017 bzp	1
B5	Washer M8 200-ST DIN6796 BZP	1
B6	Bracket for control cabinet	8
B7	Washer M8 8.8 DIN127B BZP	2
B8	BOLT M8X16 8.8 DIN7984 AS	2
B9	Back plate	1

Component B1 M5-use 3Nm
Component B4 & B8 M8-use 14Nm

INSTALLATION OF BACK PLATE AND FRAMES ON PLINTH

BOM ID	Description	Qty
T1	D1107294_001-Washer M6 200-A4 ISO7090	4
T2	D1242725_002-BOLT M6X16 A4.80 ISO4017	4
T3	D1864647_001-Aux-filter box assy	1
T4	D1883529_001-Nut M6 hex clinching BZP	4

M6 - use 6Nm

INSTALLING KOMPRIMERING AF KOMPONENTER

BOM ID	Description	Qty
D1	PS 1003567_002-TRANSFORMER 7.4kVA PRI 690 SEC 55 TO 230V	1
D2	10002303 Siemens HUE 10000_002-490-230VAC control Inrb	1
D3	D1163733_001-Screw_top_M5_5x13 A4.70 ISO14585-C	8
D4	D1839848_002-Divided back plate	1

Component D3 M5-use 3Nm

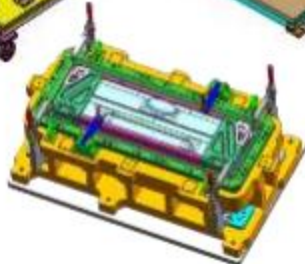
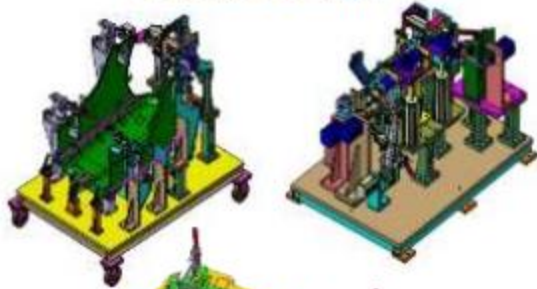
MOUNTING THE TRANSFORMER AND DIVIDED PLATE

Images for reference only

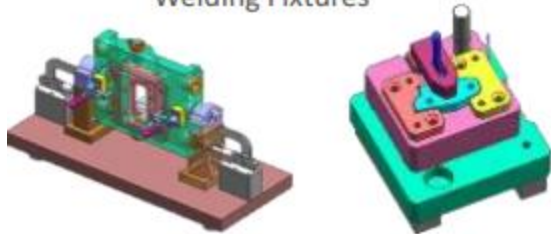


Tooling and MHE Support & Services

Fixture Design



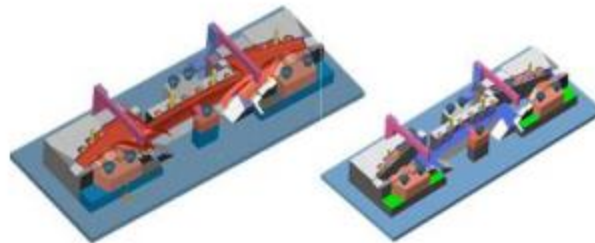
Welding Fixtures



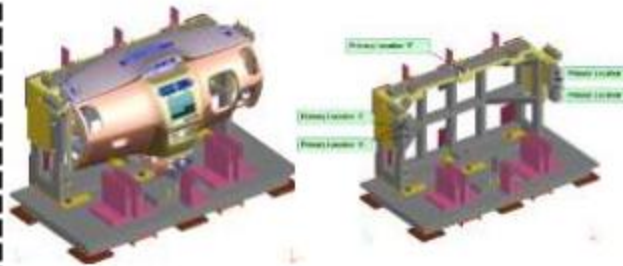
Machining Fixtures

- Automated/ Semi Automated Fixtures

Gauge Design



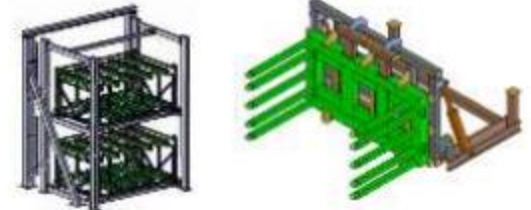
Defroster Duct Lower Gauge



Cockpit Gauge

- Modular Fixtures
- Part Handling Automation

MHE- Material Handling Equipment



- Poka-Yoke
- 100% Safety

Images for reference only

Supply Chain – Service Offerings



Images for reference only

Technical Publication Services



1. Modular Documentation



2. E-Learning module



3. Flash Animation for web app



4. 3D Animation



5. Operating Manual



6. Spare part Catalogue

Process for Technical Publication:

- Content writing
- Product introduction Video
- Interactive training material
- Modular document for variants
- Catalogue creation
- Movement illustrations in FLASH
- Image illustrations
- Compliance to regulations & standards
- CE & IS Standards

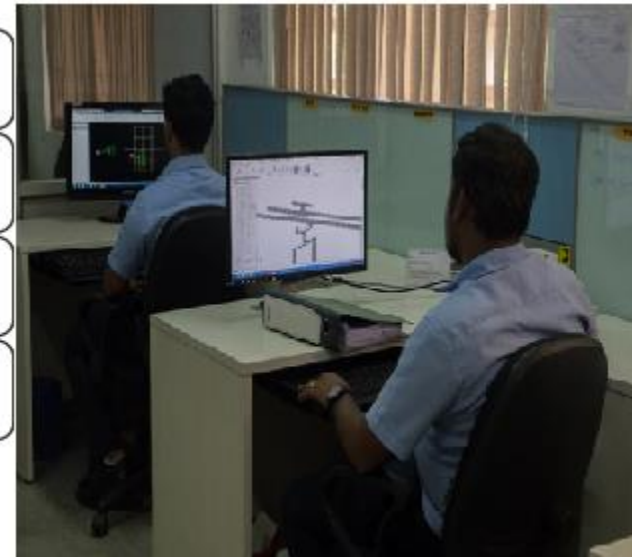
Tech-Pub Softwares

Animation & CAD Optimization

Publication Tools

Graphics Tools

Web Tools



Images for reference only



Few of our major customers



GE Energy

auma[®]
Solutions for a world in motion



Lucas-TVS Limited



LMW[®]



GILBARCO

VEEDER-ROOT



GE Industrial Systems

MACHINE
TOOL
DIVISION



MAKINO

ELGI[™]
Always Better.



Helping banks reach out



ReGen
POWERTECH

TMEiC
We drive industry



GE Healthcare



SIEMENS Gamesa
RENEWABLE ENERGY



murugappa



**SCHWING
Stetter**

ZAHORANSKY
PERFECTLY DIFFERENT

LIEBHERR

Shanthi Gears

**TOSHIBA
MACHINE**



ElectroMech



For Business Enquiry : Contact Us



K Jayakumar, Director - Operations



Jayakumar.k@lptindia.com



+91 422 617 3500



+91 98423 58926



Arasur-641407

Coimbatore- India

D. Venkatesh, Deputy Manager - New Projects

mktg_med@lptindia.com

+91 422 617 3500

+91 9965193025, +91 7708659444

Block - A1 First Floor,
Rathinam Techzone SEZ Campus,
Pollachi Main Road,
Eachanari
Coimbatore -641 021



THANK YOU